

Luxurious Living for a Modern Lifestyle !



LUXURY APARTMENTS
@ SHASTRIPURAM
2BHK & 3BHK

embrace it
love it
live it

enolife



IF YOU EVER BELIEVED IN THE

Beauty OF YOUR
Dreams...



Presenting Sky View Residency - 1

by Awon Builder & Developer

Indeed a refined manifestation of
your delightful dreams,
this stunning work of art fulfills
your aspirations which you thought
were ever so elusive.

You are invited to reach for the
stars on the wings of your dreams.





Sky View
Residency-1





BIRD'S EYE VIEW

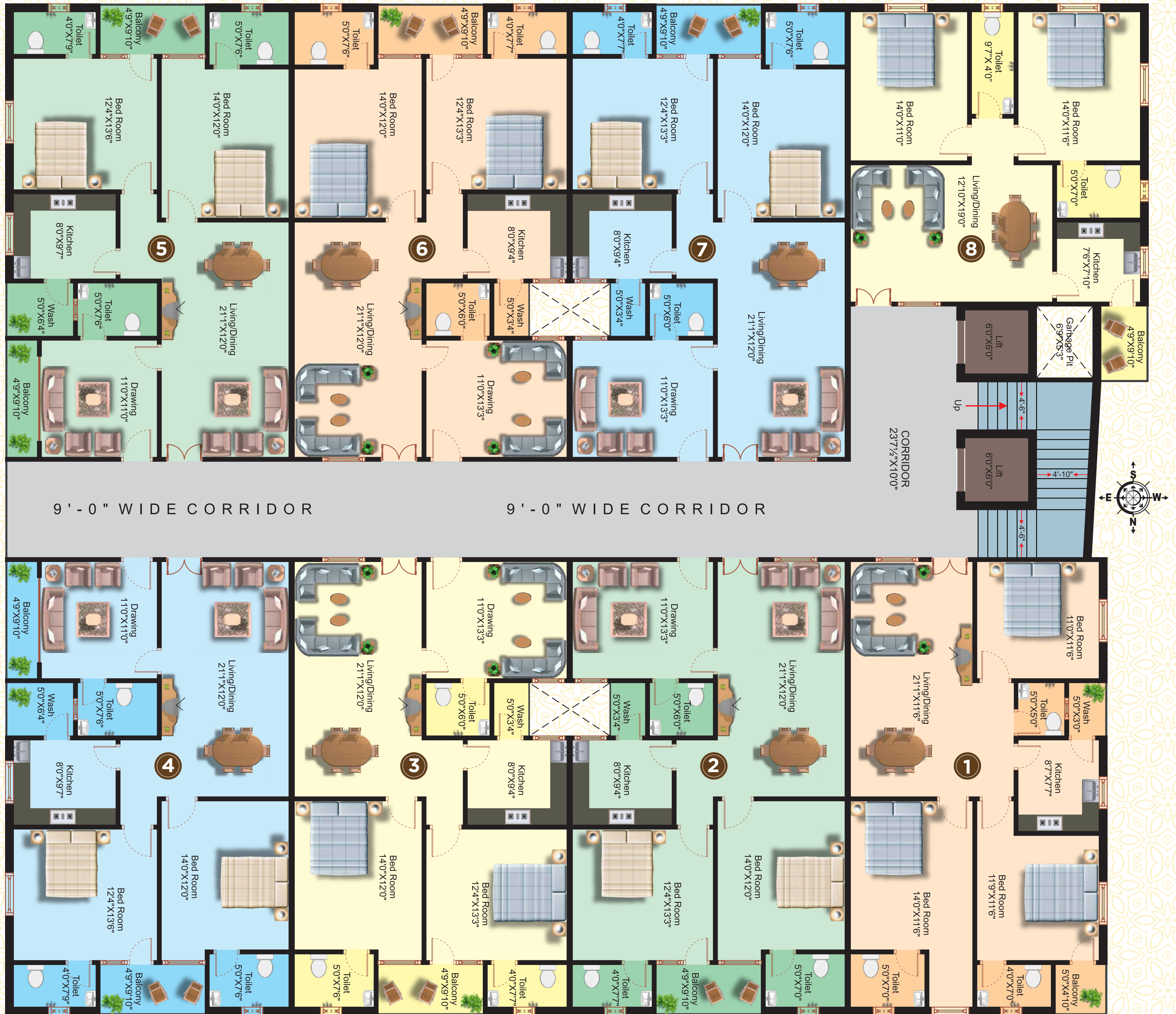
e life
embrace it
love it
live it



Sky View
Residency-1

TYPICAL FLOOR PLAN

OPEN TO SKY 3'-5"



AREA Statements

LEVEL 1 - 5			
FLAT NO. 1			
5	6	7	8
CORRIDOR			
4	3	2	1

Super Built Up Area - 1256.40 sft.

LEVEL 1 - 5			
FLAT NO. 3			
5	6	7	8
CORRIDOR			
4	3	2	1

Super Built Up Area - 1346.40 sft.

LEVEL 1 - 5			
FLAT NO. 4			
5	6	7	8
CORRIDOR			
4	3	2	1

Super Built Up Area - 1386.00 sft.

LEVEL 1 - 5			
FLAT NO. 8			
5	6	7	8
CORRIDOR			
4	3	2	1

Super Built Up Area - 1000.80 sft.

Sky View
Residency-1





LEVEL 1 - 5

FLAT NO. 1

1	2	3	4
8	7	6	5

Super Built Up Area - 1256.40 sft.



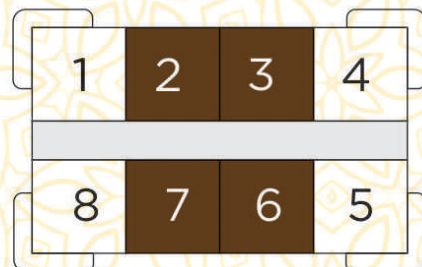
3BHK

LUXURY APARTMENTS



LEVEL 1 - 5

FLAT NO. 3



Super Built Up Area - **1346.40 sft.**



3BHK

LUXURY APARTMENTS

Sky View
Residency-1



LEVEL 1 - 5

FLAT NO. 4

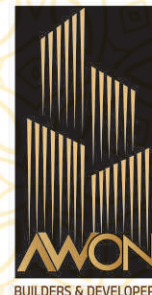


Super Built Up Area - 1386.00 sft.



2BHK

LUXURY APARTMENTS



LEVEL 1 - 5

FLAT NO. 8

1	2	3	4
8	7	6	5

Super Built Up Area - 1000.80 sft.







BASEMENT - 2



SPECIFICATION

STRUCTURE

RCC- Frame Structure

MAIN DOOR

Indian Teak Wood Door Frame section of 5'-3" and teak wood door of 1.5" thickness, single teak shutter with melamine polish and brass fittings with suitable lock set.

FLOORING

Standard vitrified flooring tiles with 4" skirting and anti-skid ceramic tile flooring in toilets, balcony and utilities.

PLASTERING

Asian Premier Emulsion for inner walls with Birla Putty Finish, elevation, sides with texture, Apex Paint, Rain Guard for other exterior walls.

KITCHEN

Granite Counter – Top with stainless steel sink. 3' height wall tile dado above counter-top. Provisions for Chimney.

WATER SUPPLY

Bore water for general purpose will be supplied through sump and overhead tanks. Hot water supply for master and children's room toilets, through geyser provisions. Water purifier provision above kitchen sink.

PAINTING

Two coats of smooth internal plastering and two coats of external plastering with water proof cement compound.

SANITARY

Superior quality sanitary fittings, EWC for master toilet, Indian for common toilet.

LIFT

Two lifts of 8 passenger capacity of standard make

WALLS

External Walls - 9" Thickness, Internal walls of 4" thickness and table-moulded lightweight bricks with cement mortar.

INTERNAL DOOR

Indian Teakwood door frames section, 32 mm thickness molded flush doors with enamel paint with teakwood frame fixed, with good quality ironmongery.

PLUMBING

All water pipelines of Ashirvad CPVC brand, Sudhakar PVC Pipe for waste water and CP fittings of plumber make or equivalent, diverters with health faucets in the bathrooms.

WINDOWS

UPVS sliding shutters with mosquito mesh with three – track provision.

COMMON AMENITIES

- a) Generator power backup for lift, common area and multipurpose hall.
- b) LED Lights for common area
- c) CC Cameras for lobbies, cellar, corridors, staircase, lift opening, covered

TOILETS

Anti-skid concept ceramic tiles for flooring and walls concept ceramic tiles upto 7' (Door top level), Fosroc water-proofing liquids, used for toilet water-proofing with two coats.

ELECTRICAL

Concealed copper wiring for light, fan, plug and power plug points wherever necessary. Power plug for refrigerator, mixer grinder, microwave oven and chimney in kitchen, washing machine. Utility flame-retardant, low smoke medium duty ISI – Certified PVC conducts, AC Points in two Bedroom. Modular switches like Finolex, Legrand or equivalent. Power plug points for TV and computer in hall and master bedroom.

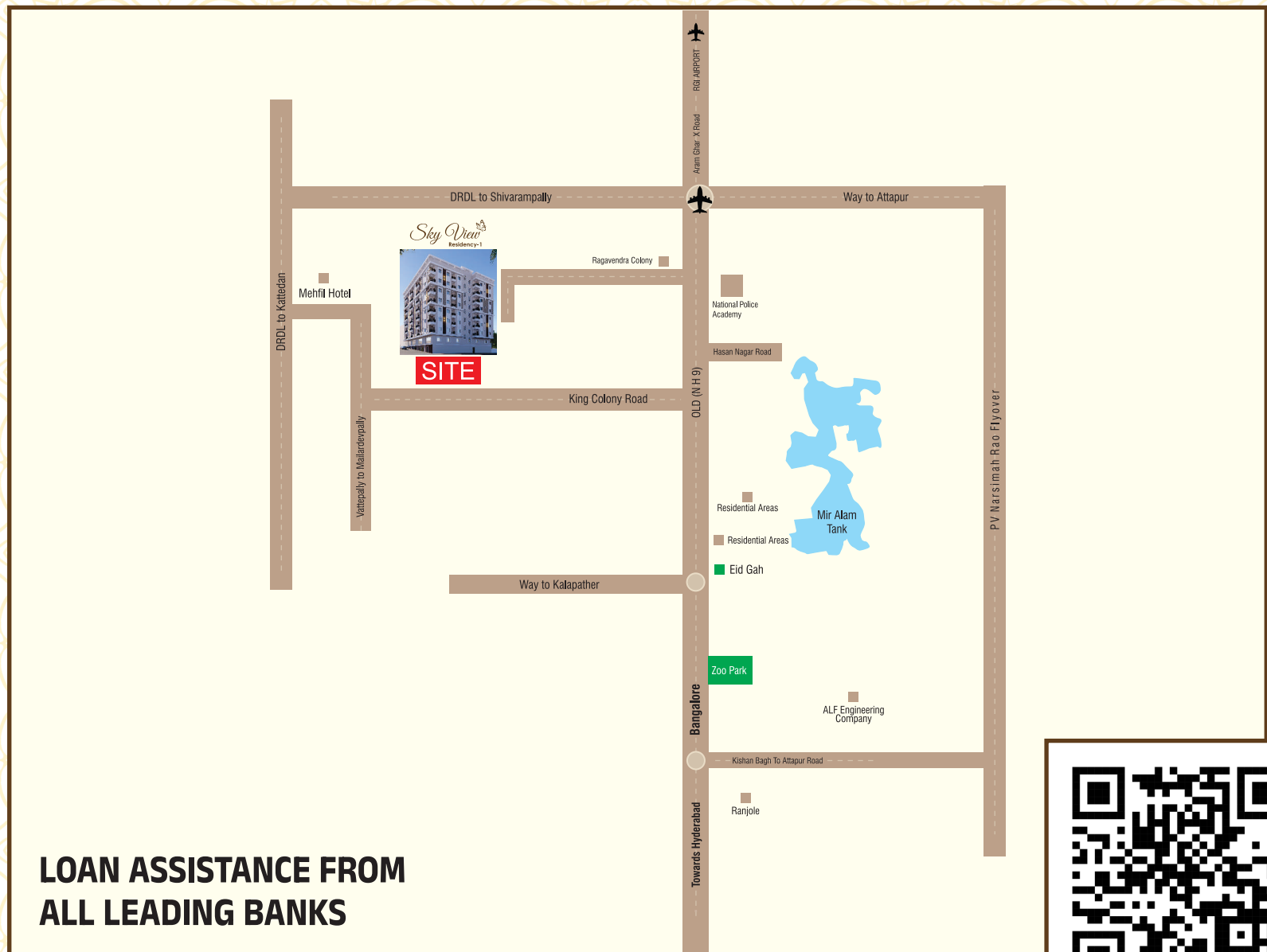
OTHER FACILITIES

On Every Floor Garbage Shoot • Fire Extinguisher

ALL FACILITIES IN ONE SHADE : SUPER MARKET, PHARMACY, LAUNDRY, FRESH DAIRY PRODUCTS ETC.

Note : Registration charges, GST and any other taxes applicable as per government norms to be borne by customers only.

LOCATION MAP



**LOAN ASSISTANCE FROM
ALL LEADING BANKS**



Scan for Site Location



For Booking Contact

9700201303
8877887705
8639804494

Middle East Contact

+971 55 255 6634
+971 55 280 4354
+971 55 715 0722



Shastripuram, SAR Garden Road, Hyderabad -500005. TS. India.

www.awondevelopers.com

Note : This brochure is only a conceptual presentation of the project and not a legal offering, the promoters reserve the right to make changes in plans, specification and elevations as deemed fit.